

-Bitte scannen Sie den QR-Code, um das deutsche Handbuch, das Installationsvideo und die Funktionseinführung zu erhalten
-Escanee el código QR para obtener el manual en español, el video de instalación y la introducción de la función
-Veuillez scanner le code QR pour obtenir le manuel en français, la vidéo d'installation et l'introduction des fonctions
-Отсканируйте QR-код, чтобы получить руководство на русском языке, видео по установке и описание функций
-Scansionare il codice QR per ottenere il manuale in italiano, il video di installazione e la guida alle funzionalità. Video di installazione e funzionalità
-Lela o código QR para obter o manual em português, o vídeo de instalação e a introdução das funções
-Zeskanjaj kod QR, aby uzyskać instrukcję obsługi, film instalacyjny i wprowadzenie do funkcji
من فضلك قم بمسح رمز الإمتجانية السريع (QR-code) للحصول على دليل المستخدم باللغة العربية وفيديو التثبيت وصف الوظائف



请扫描二维码获取中文的说明书、安装视频及功能介绍

Warning

- To reduce the risk of Fire, Electric Shock, or Injury to Persons:
1. This appliance is only intended for household use, including similar use in hotels.
 2. Place this appliance on a stable level and non-slippery surface.
 3. Do not use this appliance in wet surroundings (eg. in the bathroom or near a shower or swimming pool).
 4. Make sure the adaptor does not get wet.
 5. Do not let water run into the appliance or spill water onto the appliance.
 6. Only use the original adaptor. Do not use the other adaptor if they are damaged.
 7. This appliance has no on/off switch. To disconnect the appliance from the power source, remove the plug from the wall outlet.
 8. Do not use this appliance as a means to reduce your hours of sleep. The purpose of this appliance is to help you wake up more easily. It does not diminish your need for sleep.

Storage

1. Clean the appliance with a soft cloth.
2. Do not use abrasive cleaning agents, pads or cleaning solvents like alcohol, acetone, etc. as this might damage the surface of the appliance.
3. If the appliance will not be used for an extended period of time, remove the power cord from the wall outlet and store the appliance in a safe, dry surroundings where it will not be crushed, banged, or subject to damage.

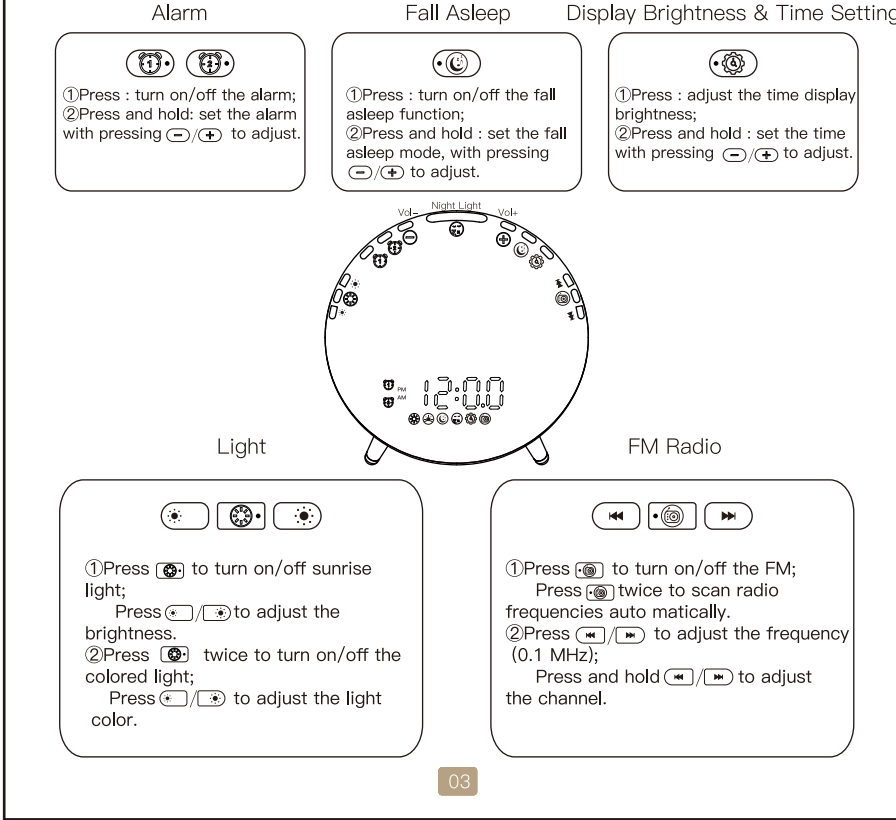
Produce description

The WiFi wake-up light is a smart home device that can be remotely controlled by connecting to the mobile phone APP via WiFi. This kind of light usually has features such as timer switch, brightness adjustment, color temperature adjustment, etc., which can be customized according to the individual's needs and preferences. At the same time, the WiFi wake-up light can also be linked with other smart home devices to achieve a more intelligent home experience.

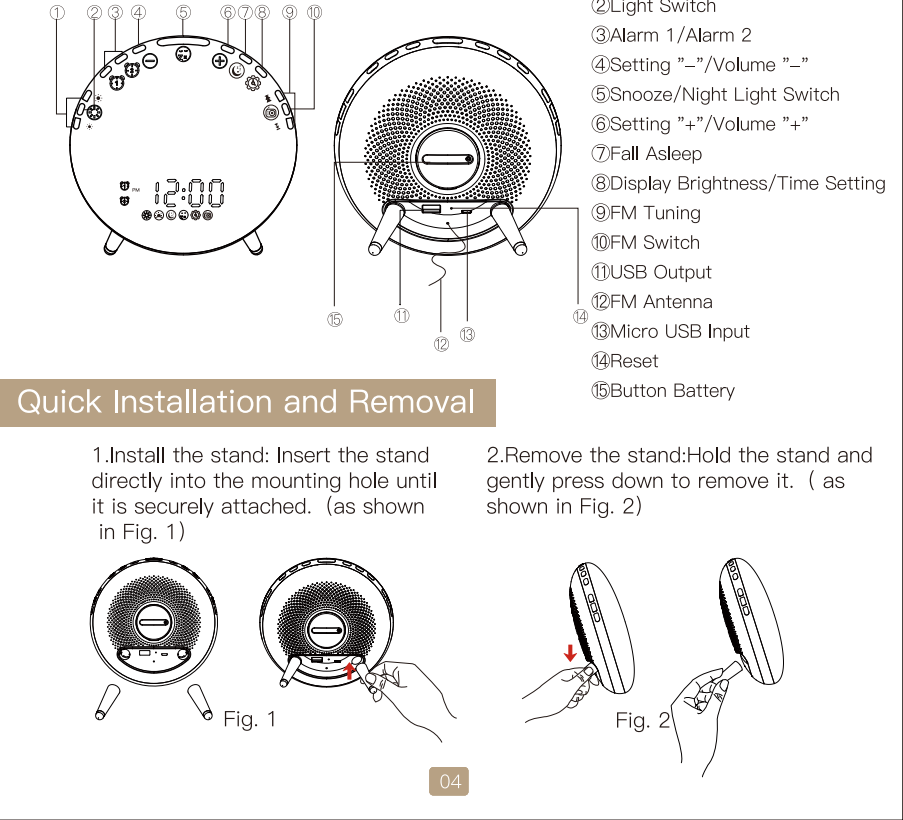
Specification

Product Name	Wake-up Light
Brightness Adjustment	20 Levels
Light Color	7
Volume Adjustment	16 Levels
Display Brightness	3 Levels
Alarm Groups	4
Type of Alarm Sound	7 Natural Sounds & FM Radio
Sunrise Simulating Time	Adjustable 10–60 Minutes
Alarm Mode	Light & Sound; Sound Only; Light Only
Alarm Time	30MIN
Snooze Time	8–15MIN
Number of Snooze Times	5
Fall Asleep Sound	3 Natural Sounds & FM Radio
Sunset Simulating Time	10–120 Min
Fall Asleep Mode	Light & Sound; Sound Only; Light Only
Frequency	76.0–108MHz
Material	Light-proof ABS + PC + Silicone
Operating Temperature	0°C–40°C (32°F–104°F)
Type of Battery	Button Cell CR2032
Input Voltage	100–240V
USB Output	5V/2A
Frequency band:	2.4GHz
Puissance d'émission radio maximale:	<+17.5dBm

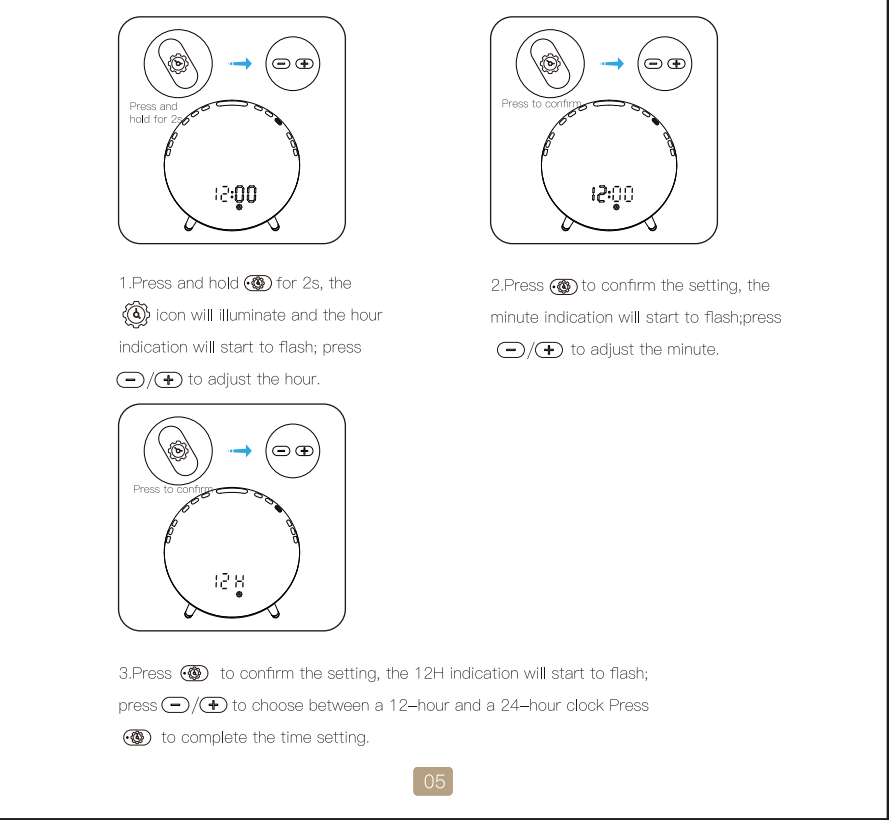
Quick-start Guide



Overview

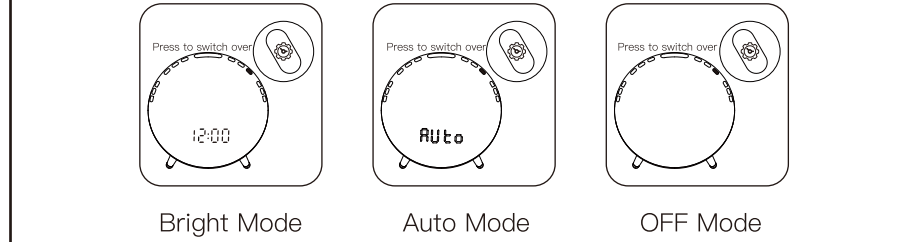


Time & 12/24H Setting



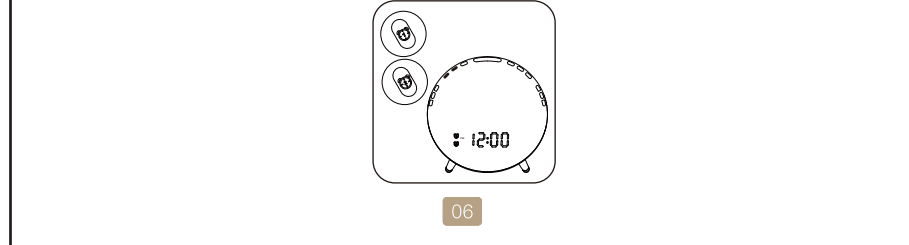
Display Brightness

Press the 'Brightness' button to adjust the display brightness. 3 Levels: Bright – Auto – OFF.
Default Brightness: Bright.



Alarm Function

1. Alarm Groups
Allow users to program 2 alarms based on individual needs. For example, set Alarm 1 for weekdays and Alarm 2 for weekend. Note: the setting of 2 alarms is the same.

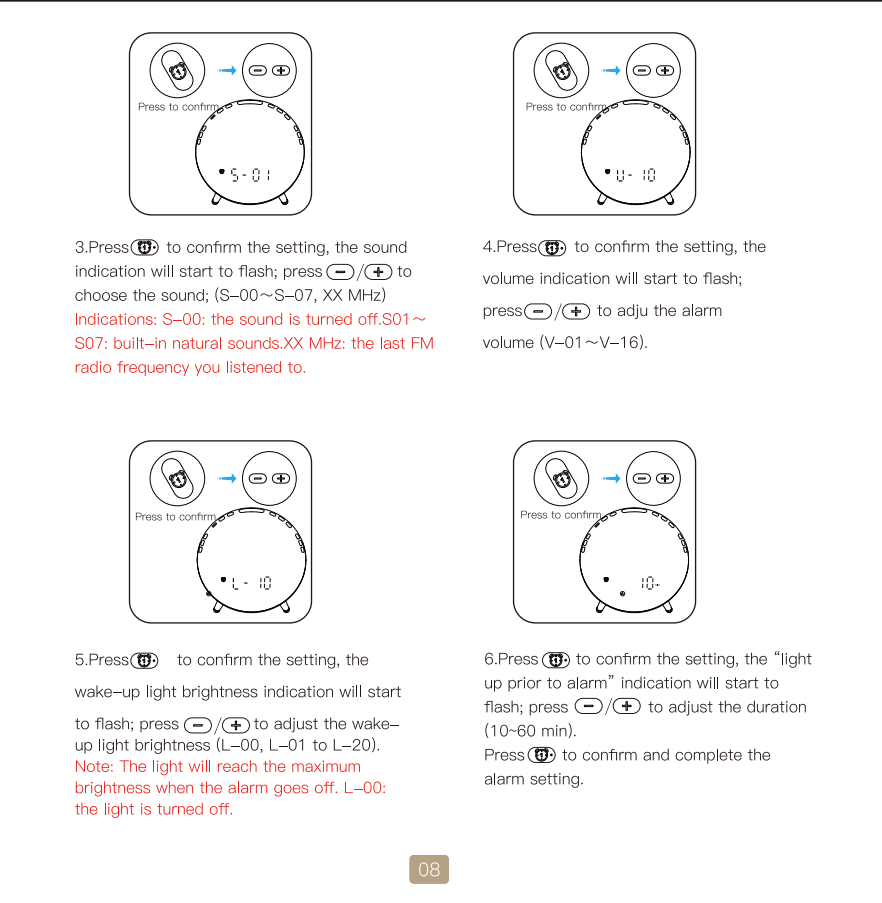
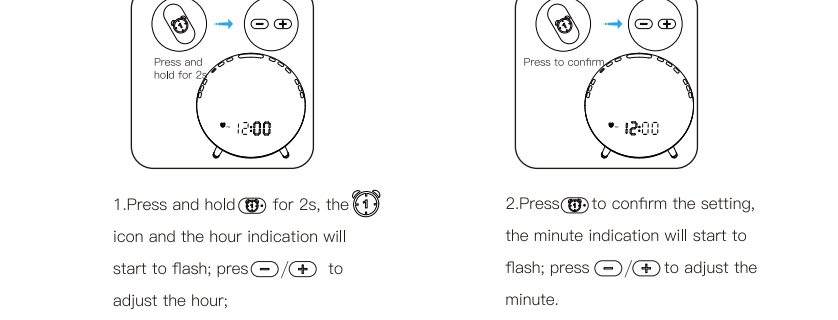


2. Alarm Switch (Alarm 1 as the example)

Press the 'Alarm Switch' button to turn on/off the alarm. When Alarm 1 is turned on, the 'Alarm 1' icon will illuminate on the display.

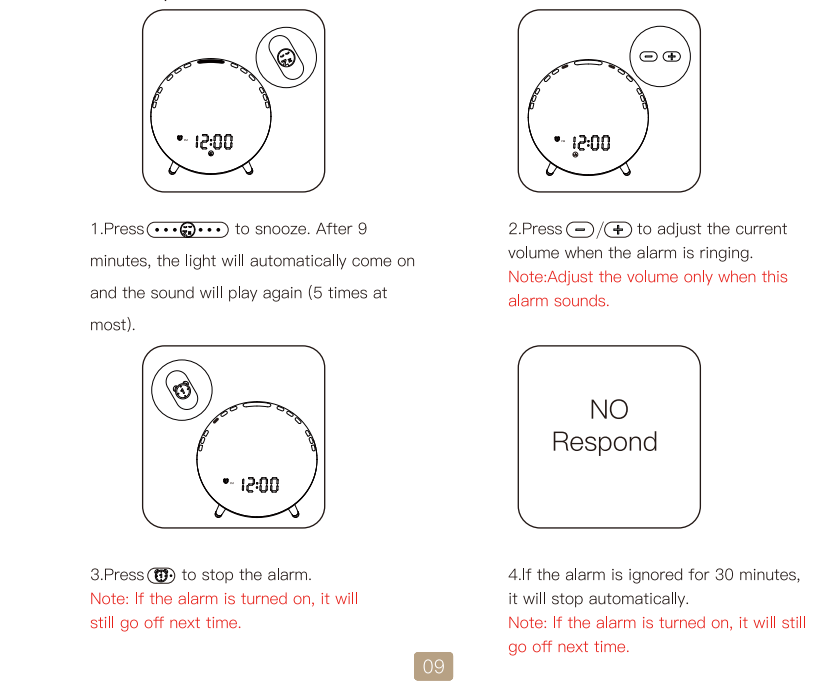


3. Alarm Setting



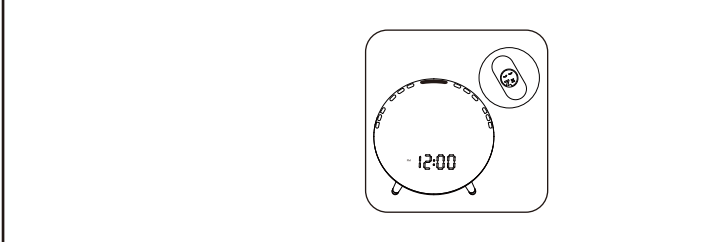
Snooze and Stop

The wake-up light can simulate sunrise to gradually increase the brightness. The alarm will go off at set time as the wake-up light reaches the set brightness. When the alarm goes off, you can tap to snooze, adjust the alarm volume or stop the alarm.

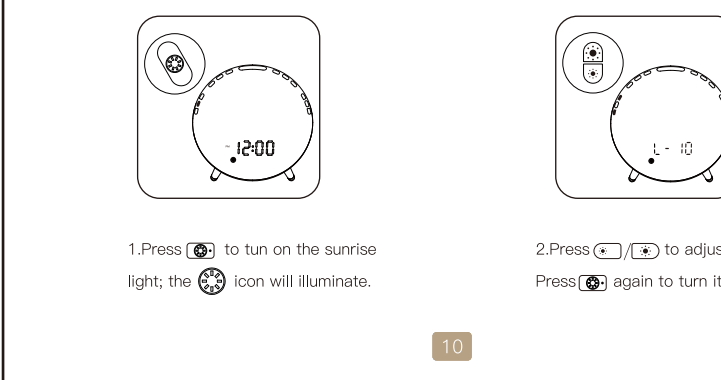


Light Function

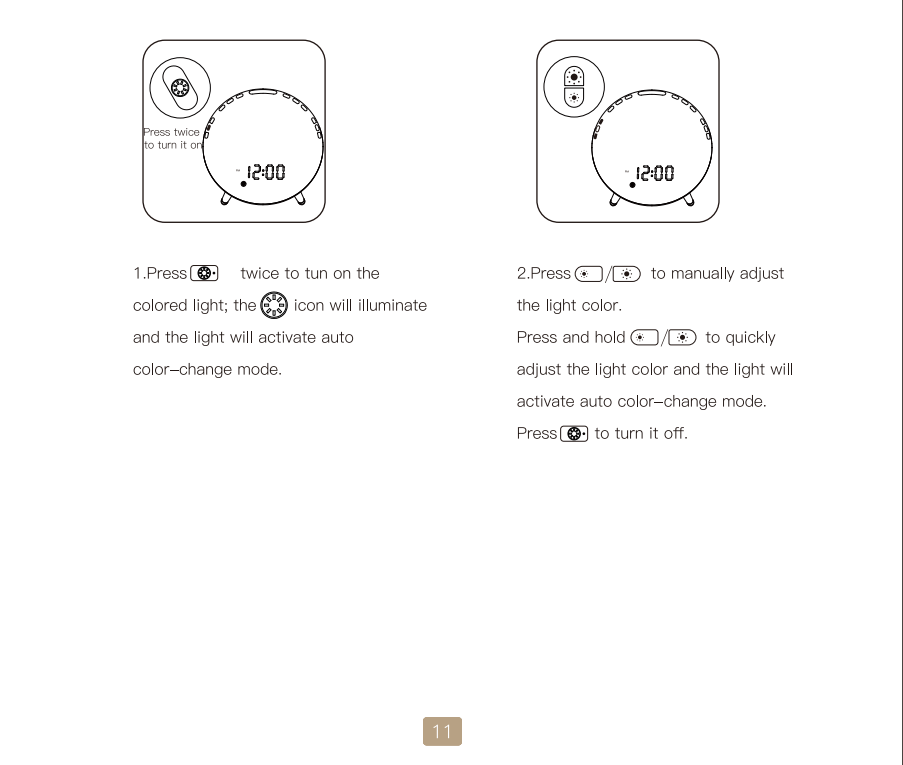
1. Night Light
Press the 'Night Light' button to turn on/off the night light. Note: Night light is dim; it is recommended to use at night.



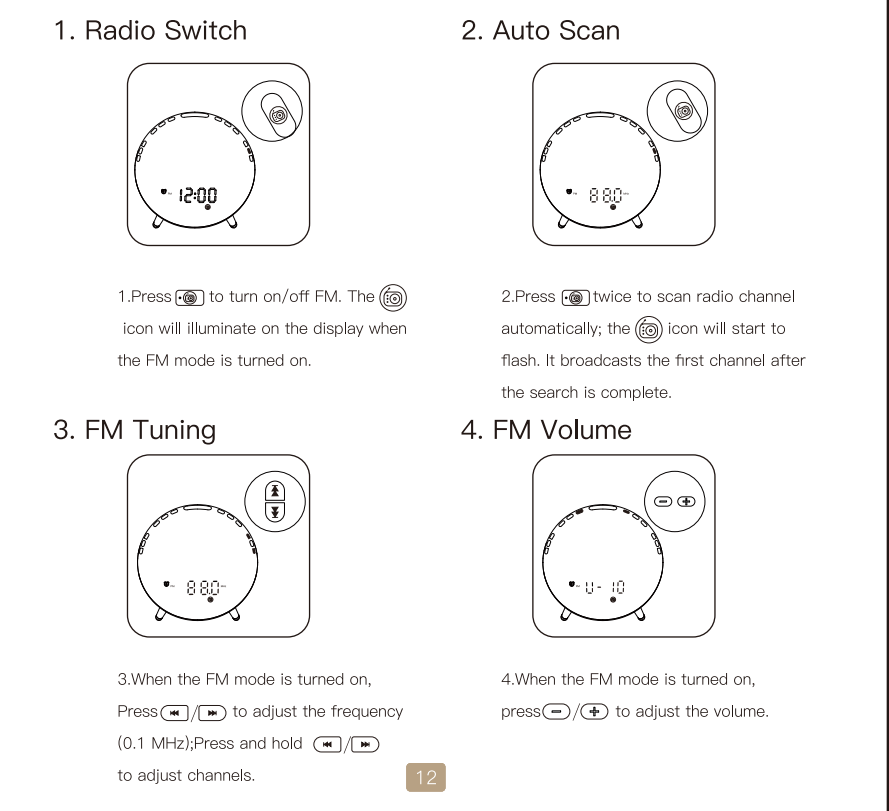
2. Sunrise Light



3. Colored Light

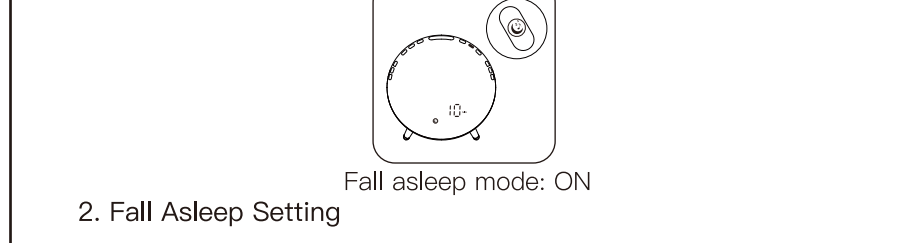


FM Radio

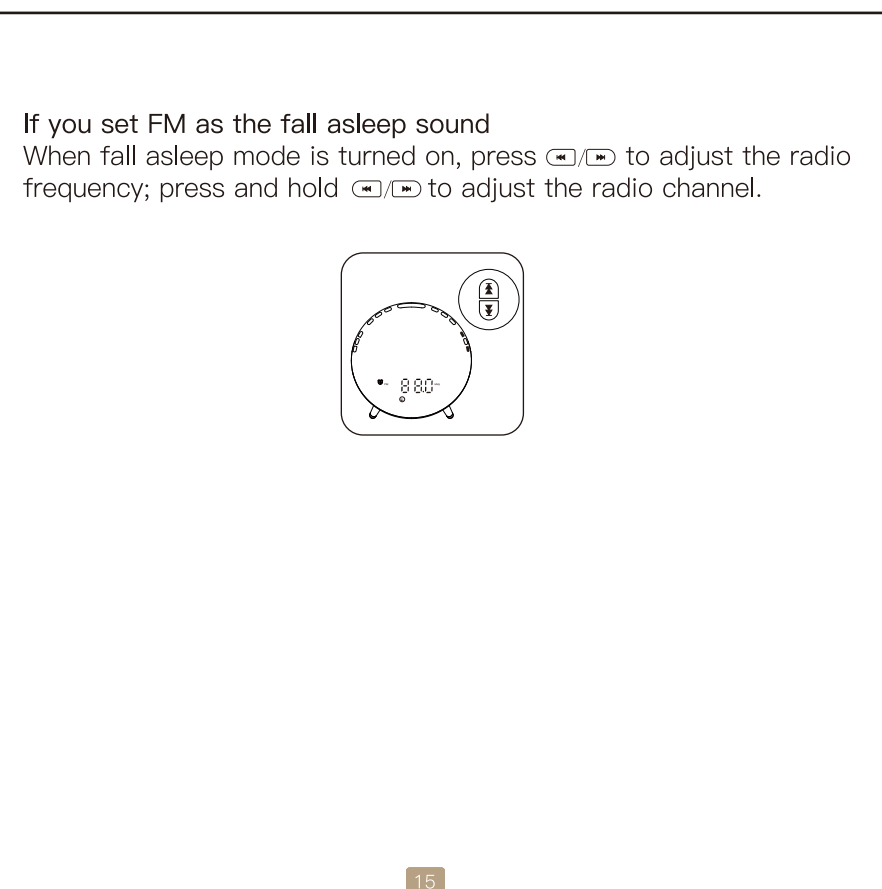
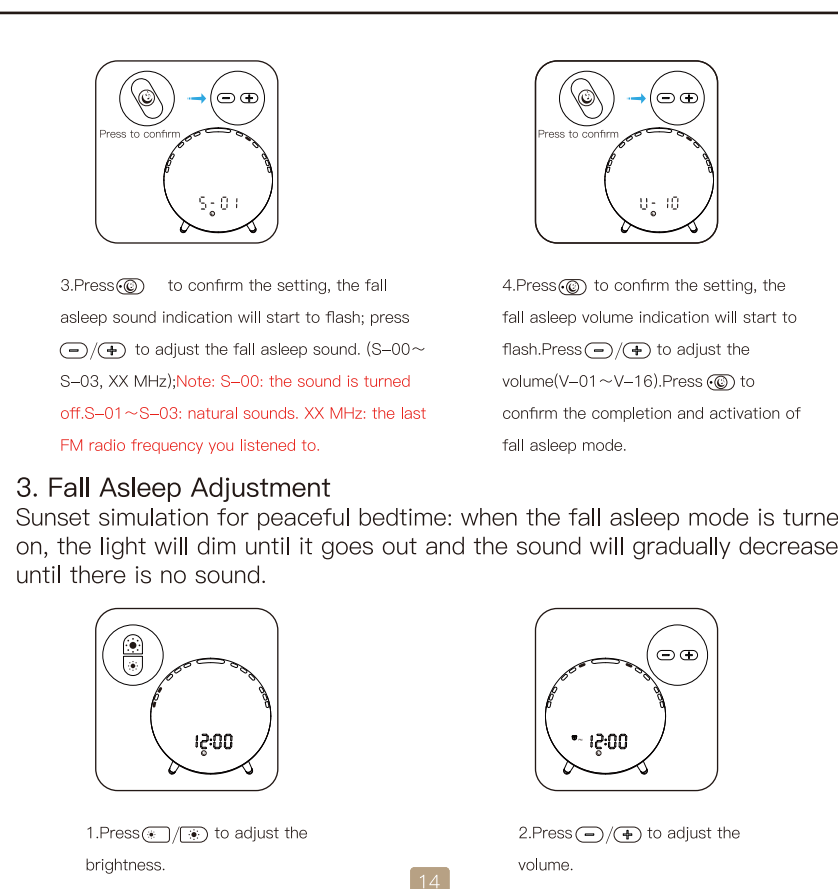


Fall Asleep Function

1. Fall Asleep Switch
Press the 'Fall Asleep Switch' button to turn on/off the fall asleep mode. The 'Fall Asleep Switch' icon will illuminate on the display when the fall asleep mode is turned on.



2. Fall Asleep Setting



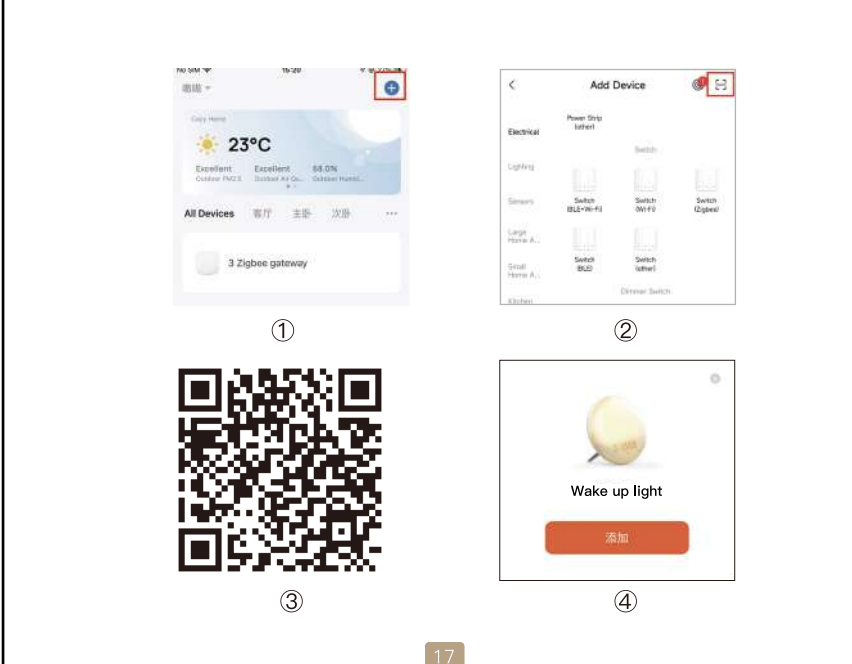
Preparation for Use



Wi-Fi link method

1.Method one:

Make sure your moes APP has successfully connected to Wi-Fi



2.Method two:

1. Make sure your phone is connected to Wi-Fi and Bluetooth.

